



TENT SETUP INSTRUCTIONS

Instant up, small tent, full fly

(The product may look different from yours. It is for illustration purpose only.)

Before you begin

- Read all instructions before set up.
- Select a level site clear of rocks, branches, and other hard or sharp objects, to install your tent.
- ⚠ **WARNING: Keep clear of overhead power lines.**
- Do not set up your tent under trees because of potential lightning strikes or falling tree limbs in inclement weather.
- **NOTICE: Secure product with all ground stakes, guylines and fly attachments for optimal performance and to prevent property damage or personal injury.**
- For best results in windy conditions, position narrow end of tent into the wind.
- Two people recommended for setup.

Things You Should Know

- Condensation is normal and IS NOT LEAKAGE. It can be minimized by providing good ventilation.
- Tree limbs, tree sap, bird droppings, or moisture steadily dripping off tree limbs can cause damage to the tent fabric and its coating.
- Do not store tents without drying it off thoroughly and brushing off caked dirt.
- Stakes should be removed by pulling on the stake itself. **NEVER PULL ON THE TENT TO REMOVE STAKES AS THIS COULD RESULT IN PROPERTY DAMAGE OR PERSONAL INJURY.**
- Prolonged exposure to the sun can seriously damage material and/or cause it to become discolored.

⚠ WARNING: KEEP ALL FLAME AND HEAT SOURCES AWAY FROM THIS TENT FABRIC.

This tent meets the flammability requirements of CPAI-84. The fabric may burn if left in continuous contact with any flame source. The application of any foreign substance to the tent fabric may render the flame-resistant properties ineffective.

Coleman Brands Pty. Ltd.
Unit 5-6, 13 Lord Street,
Botany NSW 2019
Australia

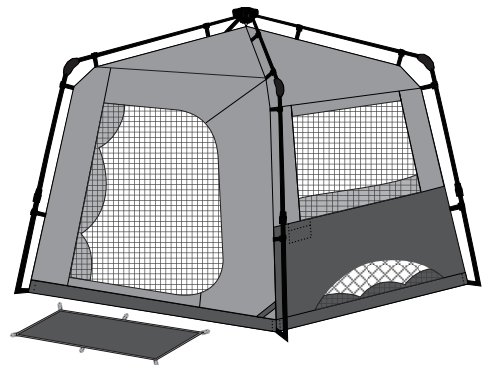
Telephone: 1800 224 350
Email: customerservice@colemanaustralia.com.au
www.colemanaustralia.com.au

© 2017 The Coleman Company, Inc. All rights reserved.
Coleman®, , and are registered trademarks of The Coleman Company, Inc.

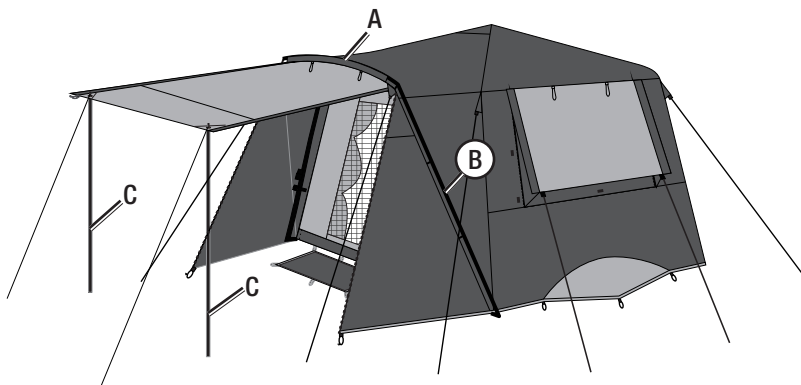
4010056750 (ECN20060981-01)

Pole List

A	Roof Pole.....	x 1	
B	Leg Pole.....	x 2	
C	Canopy Pole.....	x 2	



Tent without rainfly

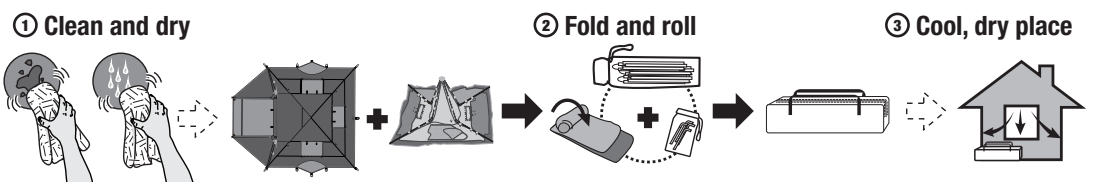


Front view of complete tent



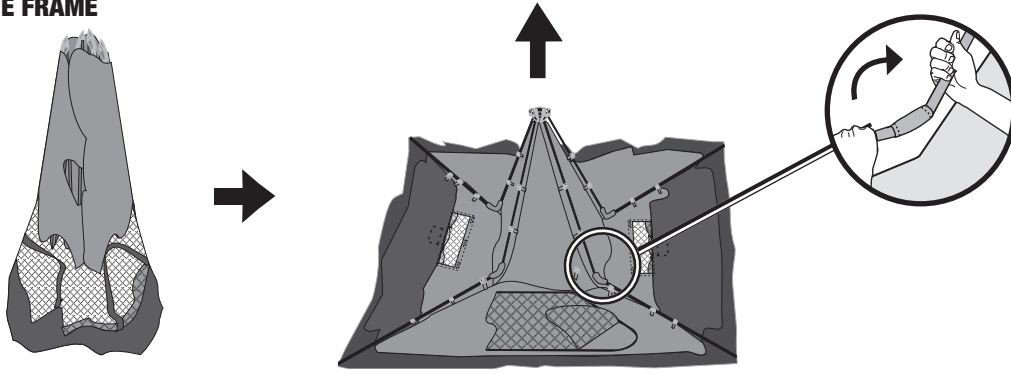
Rear view of complete tent

How to Store

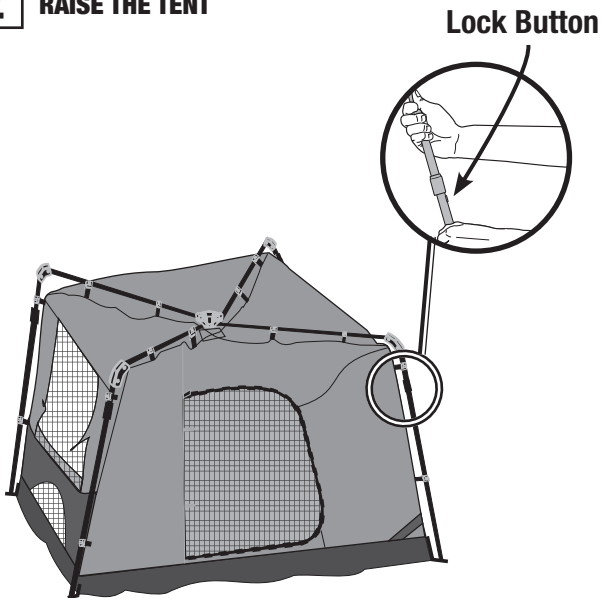


How to Set Up and Disassemble

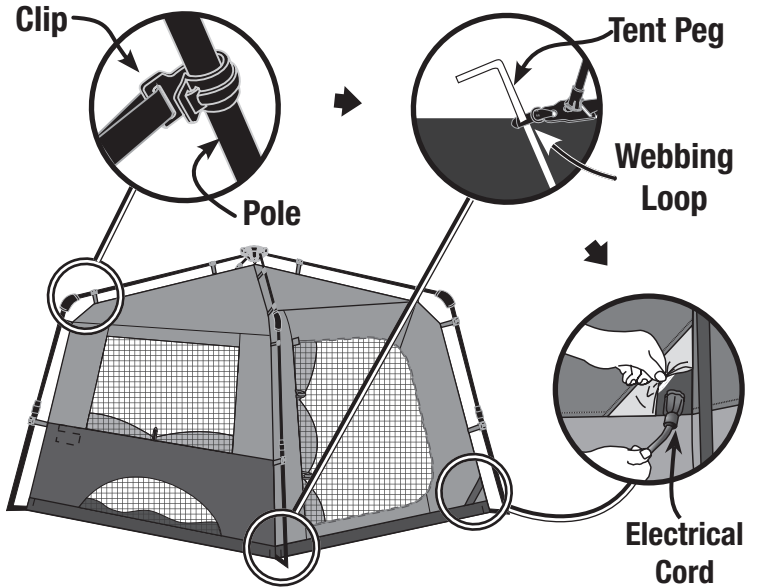
1 EXTEND THE FRAME



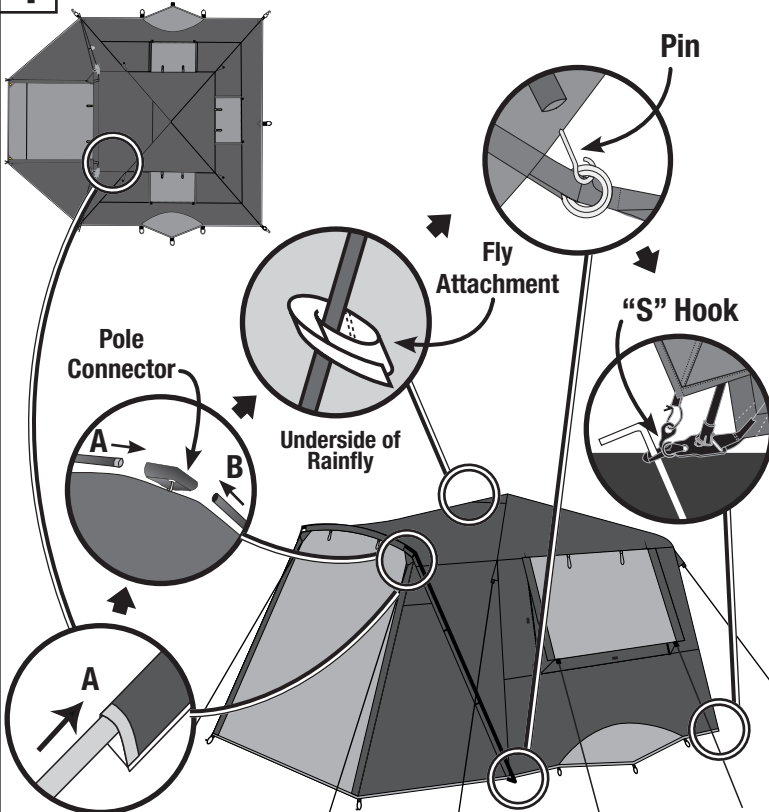
2 RAISE THE TENT



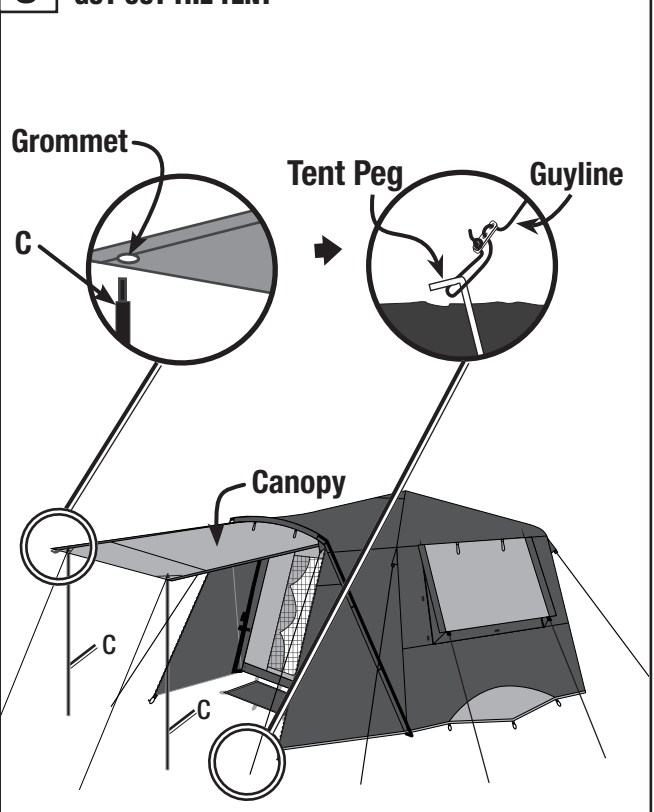
3 VERIFY CONNECTIONS BETWEEN TENT AND FRAME POLES/ PEG THE TENT



4 ATTACH RAINFLY



5 GUY OUT THE TENT



6 DISASSEMBLY

To take down the tent, follow the previous steps and illustrations in the reverse order.