



TENT SETUP INSTRUCTIONS

Instant up 6P full fly gold series

(The product may look different from yours. It is for illustration purpose only.)

Before you begin

- Read all instructions before set up.
- Select a level site clear of rocks, branches, and other hard or sharp objects, to install your tent.
- **WARNING:** Keep clear of overhead power lines.
- Do not set up your tent under trees because of potential lightning strikes or falling tree limbs in inclement weather.
- **NOTICE:** Secure product with all ground stakes, guylines and fly attachments for optimal performance and to prevent property damage or personal injury.
- For best results in windy conditions, position narrow end of tent into the wind.
- Two people recommended for setup.

Things You Should Know

- Condensation is normal and IS NOT LEAKAGE. It can be minimized by providing good ventilation.
- Tree limbs, tree sap, bird droppings, or moisture steadily dripping off tree limbs can cause damage to the tent fabric and its coating.
- Do not store tents without drying it off thoroughly and brushing off caked dirt.
- Stakes should be removed by pulling on the stake itself. **NEVER PULL ON THE TENT TO REMOVE STAKES AS THIS COULD RESULT IN PROPERTY DAMAGE OR PERSONAL INJURY.**
- Prolonged exposure to the sun can seriously damage material and/or cause it to become discolored.

WARNING: KEEP ALL FLAME AND HEAT SOURCES AWAY FROM THIS TENT FABRIC.

This tent meets the flammability requirements of CPAI-84. The fabric may burn if left in continuous contact with any flame source. The application of any foreign substance to the tent fabric may render the flame-resistant properties ineffective.

Coleman Brands Pty. Ltd.
Unit 5-6, 13 Lord Street,
Botany NSW 2019
Australia

Telephone: 1800 224 350
Email: customerservice@colemanaustralia.com.au
www.colemanaustralia.com.au

© 2017 The Coleman Company, Inc. All rights reserved.
Coleman®, Coleman® and are registered trademarks of
The Coleman Company, Inc.

4010055376 (ECN20060939-02)

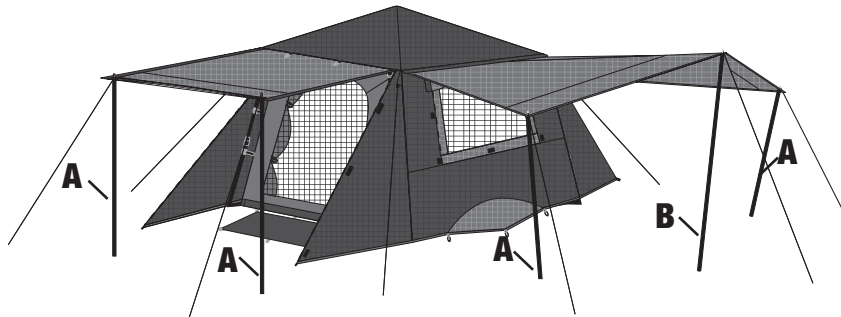
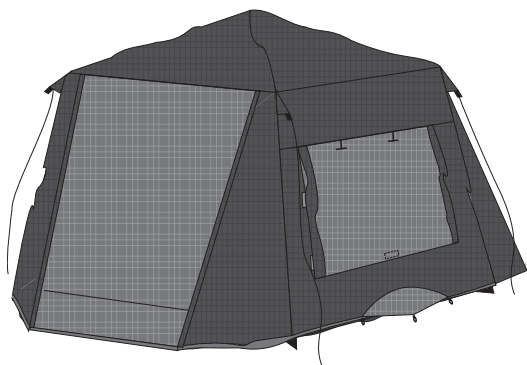
Pole List

A. Support polex 6

B. Support polex 1



Tent without rainfly



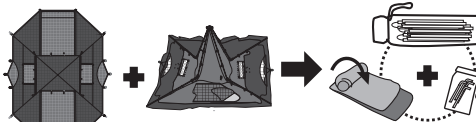
Complete tent with fly

How to Store

① Clean and dry



② Fold and roll

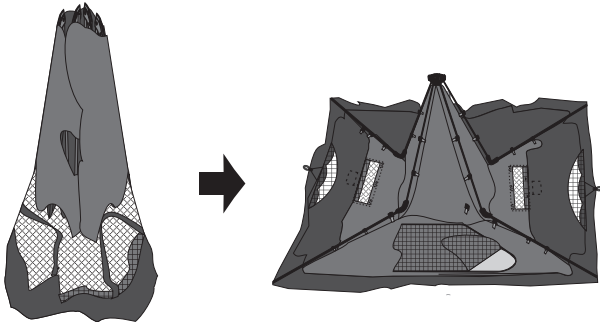


③ Cool, dry place

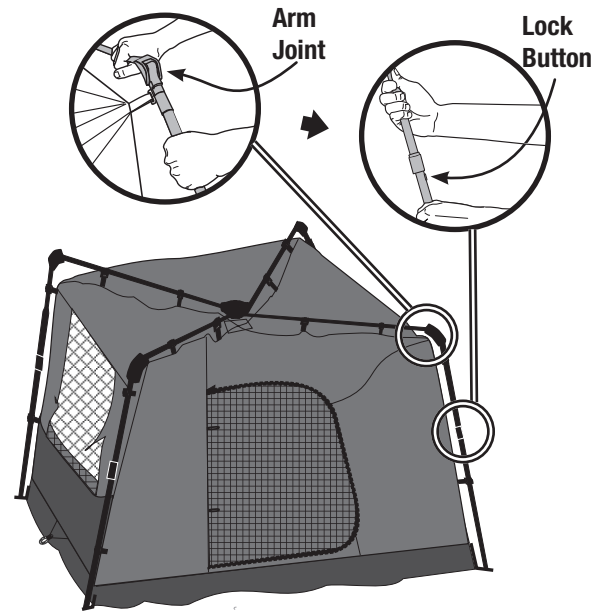


How to Set Up and Disassemble

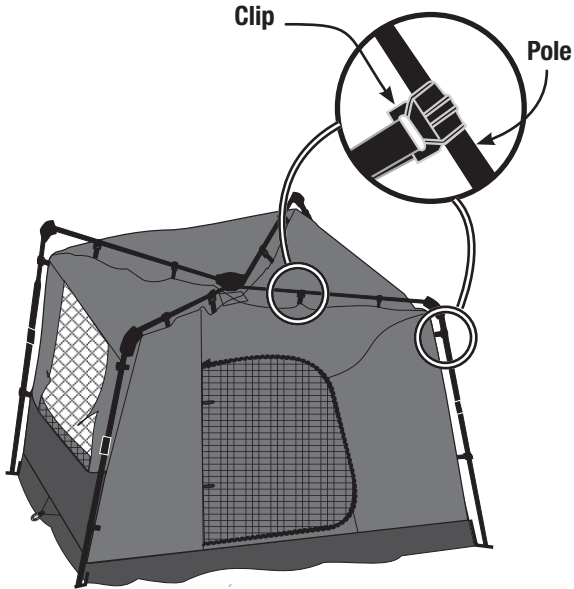
1 LAYOUT & POSITIONING OF TENT



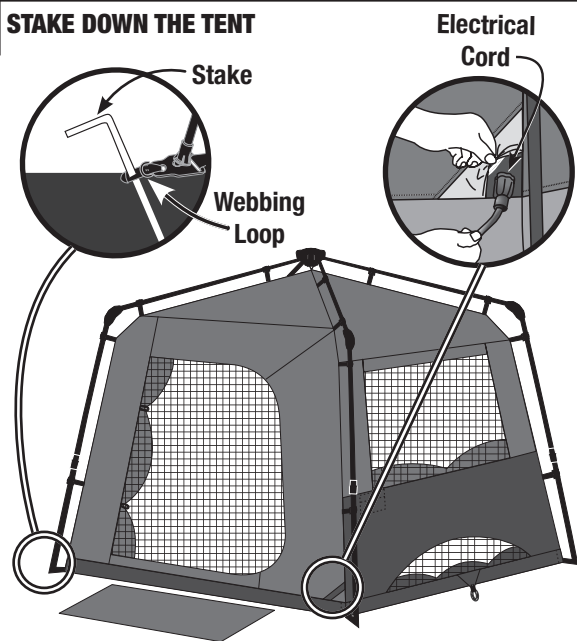
2 RAISE THE TENT



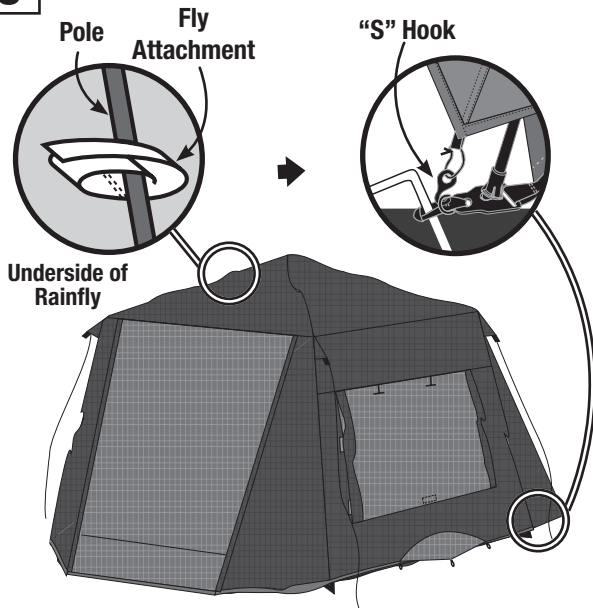
3 VERIFY CONNECTIONS BETWEEN TENT AND FRAME POLES



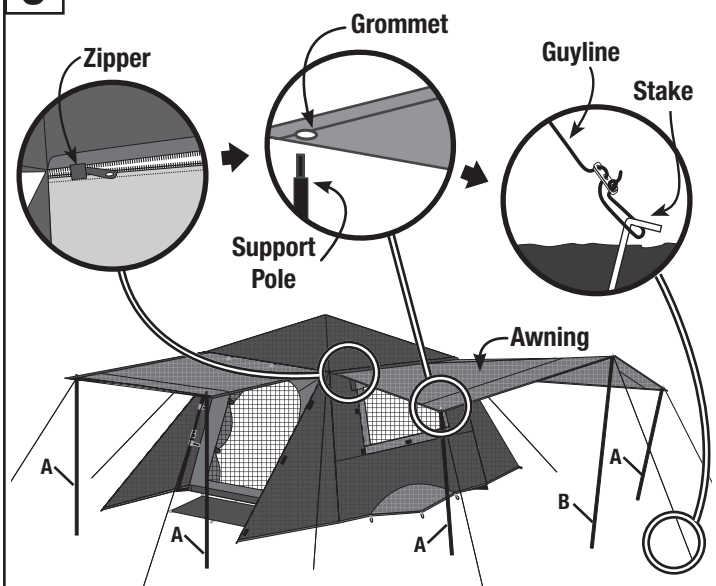
4 STAKE DOWN THE TENT



5 ATTACH RAINFLY



6 GUY OUT THE TENT/ATTACH AWNING



7 DISASSEMBLY

To take down the tent, follow the previous steps and illustrations in the reverse order.