



TENT SETUP INSTRUCTIONS

Swagger Tent

(The product may look different from yours. It is for illustration purposes only.)

Before you begin

- Read all instructions before set up.
- Set up tent prior to first camping trip to become familiar with the setup and disassembly procedures.
- Select a level site clear of rocks, branches, and other hard or sharp objects, to install your tent.
- **⚠ WARNING: Keep clear of overhead power lines.**
- Do not set up your tent under trees because of potential lightning strikes or falling tree limbs in inclement weather.
- **NOTICE:** Secure product with all ground pegs, guylines and rainfly attachments for optimal performance and to prevent property damage or personal injury.
- For best results in windy conditions, position narrow end of tent into the wind.
- Two people recommended for setup.

Things You Should Know

- Condensation is normal and IS NOT LEAKAGE. It can be minimized by providing good ventilation.
- Tree limbs, tree sap, bird droppings, or moisture steadily dripping off tree limbs can cause damage to the tent fabric and its coating.
- Do not store tents without drying it off thoroughly and brushing off caked dirt.
- Store in a cool, dry place.
- Pegs should be removed by pulling on the peg itself. **NEVER PULL ON THE TENT TO REMOVE PEGS AS THIS COULD RESULT IN PROPERTY DAMAGE OR PERSONAL INJURY.**
- Prolonged exposure to the sun can seriously damage material and/or cause it to become discolored.

⚠ WARNING: KEEP ALL FLAME AND HEAT SOURCES AWAY FROM THIS TENT FABRIC.

This tent meets the flammability requirements of CPAI-84. The fabric may burn if left in continuous contact with any flame source. The application of any foreign substance to the tent fabric may render the flame-resistant properties ineffective.

Newell Australia Pty Ltd
Level 3, 35 Dalmore Drive
Caribbean Park
Victoria 3179
ABN: 68 075 071 233
Australia
Email: customerservice@colemanaust.com.au
www.colemanaustralia.com.au

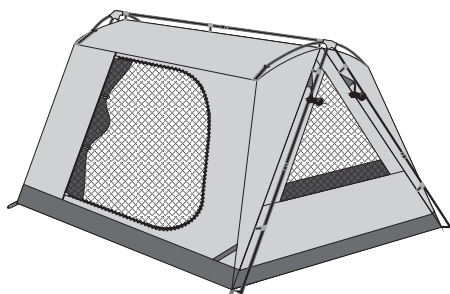
© 2020 & TM The Coleman Company, Inc.
All rights reserved.

newell
BRANDS
We would love to hear from you
1800 224 350

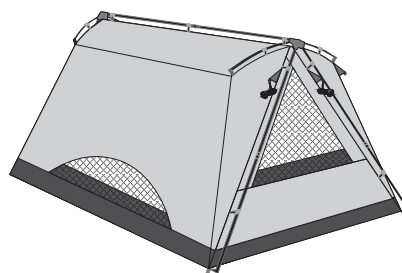
4010068214 (ECN20071970-A)

Pole List

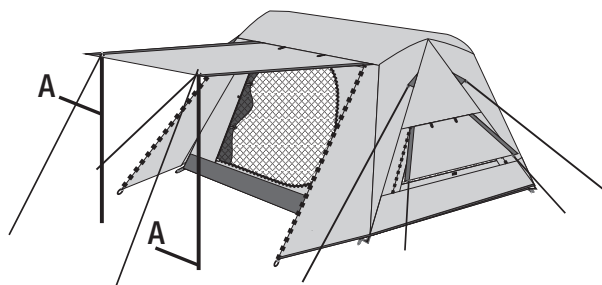
A Canopy polex2 



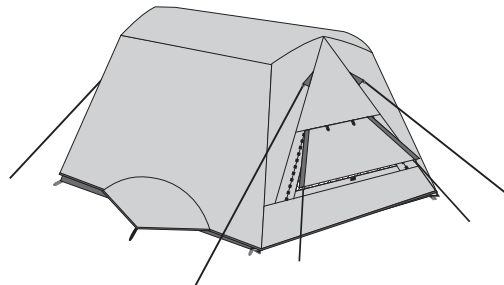
Tent without rainfly



Rear tent without rainfly



Front view of complete tent



Rear view of complete tent

How to Pack



1. Unzip door to let air escape and fold the inner tent

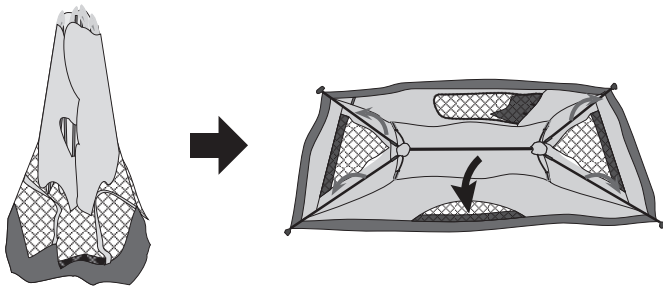
2. Fold rainfly to length of pole and use poles to roll folded rainfly.

3. Pack all in carrybag

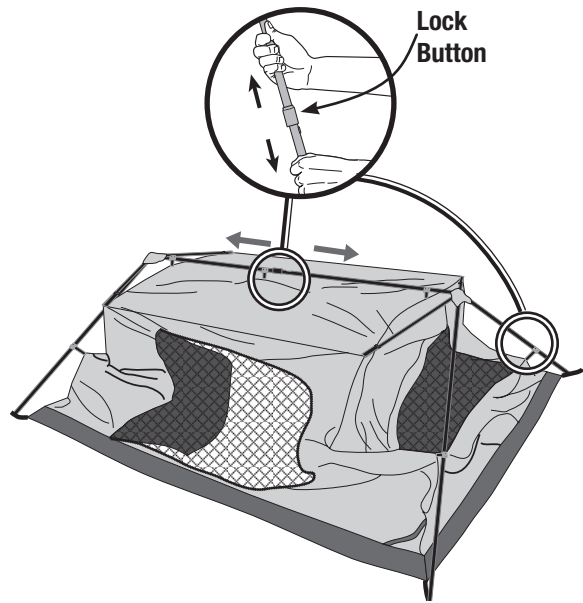
4. Place in Cool, dry place

How to Set Up and Disassemble

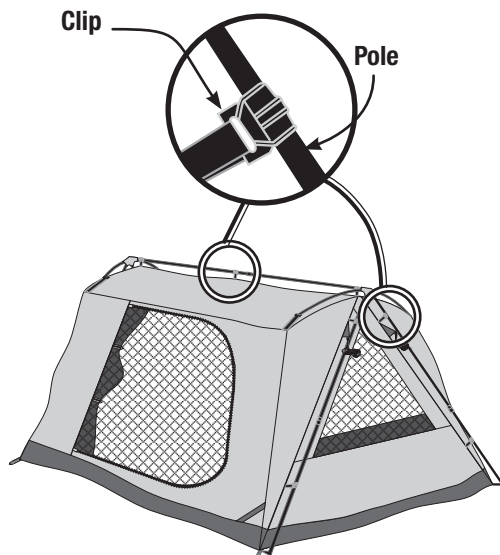
1 LAYOUT & POSITIONING OF TENT



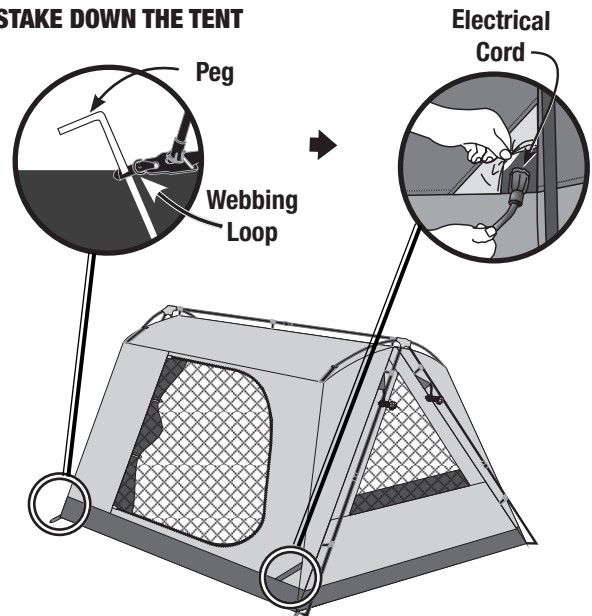
2 EXTEND ROOF AND LEG POLES



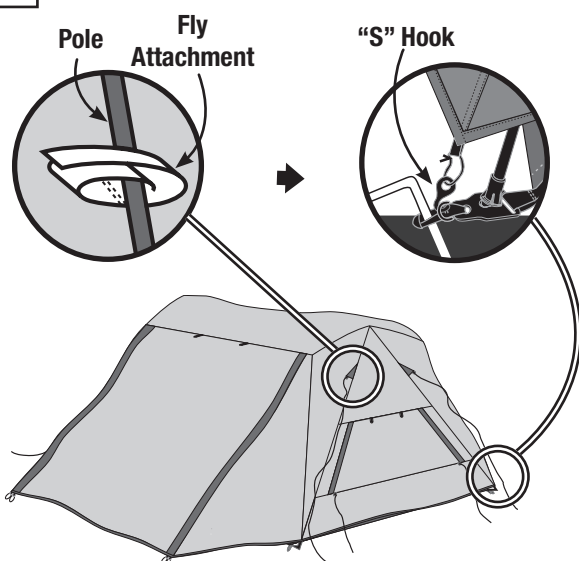
3 VERIFY CONNECTIONS BETWEEN TENT AND FRAME POLES



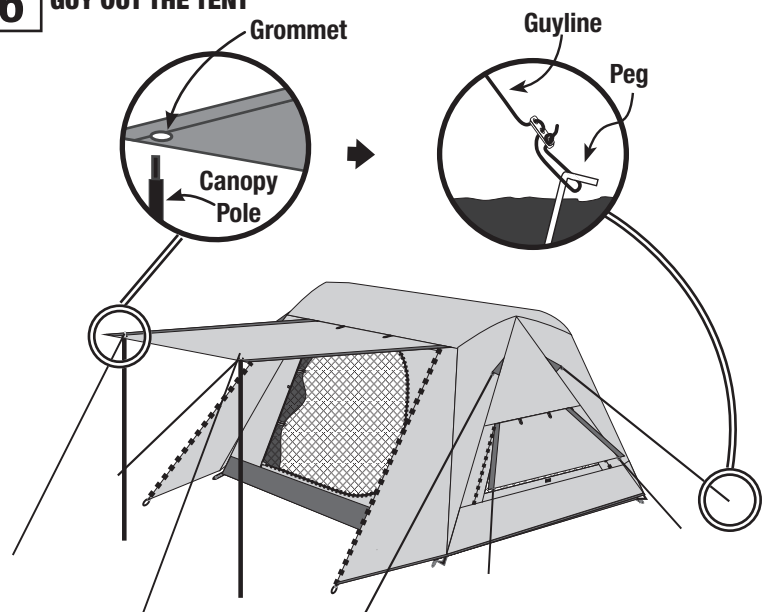
4 STAKE DOWN THE TENT



5 ATTACH RAINFLY



6 GUY OUT THE TENT



7 DISASSEMBLY

To take down the tent, follow the previous steps and illustrations in the reverse order.